

Golfview Drive

# Preston, MN

## RESIDENTIAL LOTS FOR SALE!



### GOLFVIEW DRIVE Doherty Addition

Starting at \$19,950 plus  
utility assessment

Housing incentives and  
energy rebates available  
from the City of Preston and  
Preston Public Utilities

Ask for  
Pricing and  
Covenants

CONTACT:  
**Lori Metcalf, Realtor**  
507-202-0911  
lori@LoriMetcalf.com

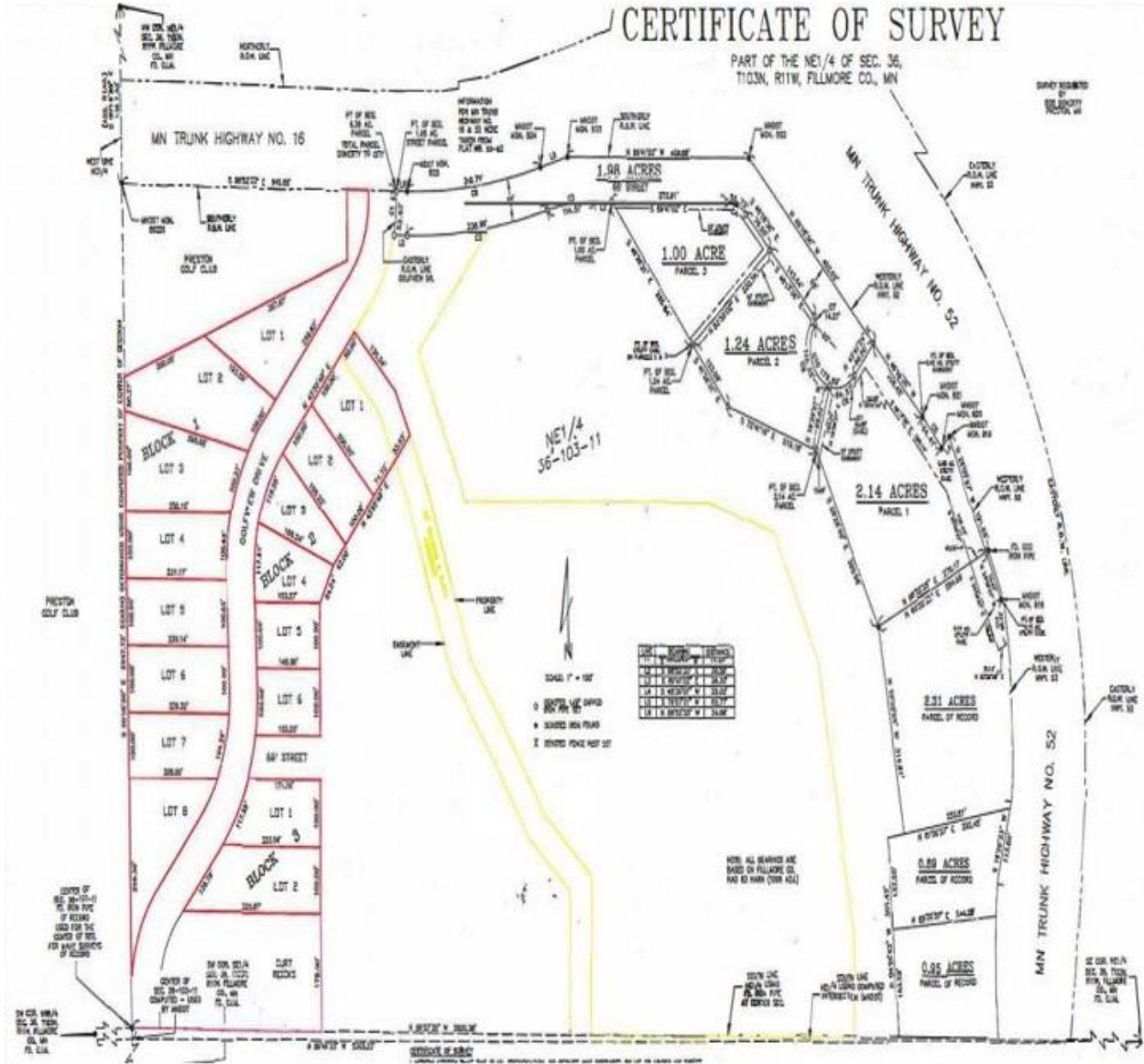
**Infinity**  
Real Estate & Management Group

FOR SALE

Located in beautiful, historic Bluff Country!

# 16 Residential Lots

# Certificate of Survey



PLAN

Rural Setting with City Amenities!

# Lot Pricing

## ***Block 1:***

Lot #1: Land=\$29,950

Lot #2: Land=\$42,950

Lot #3: Land=\$36,950

Lots #4-8: Land=\$29,950

## ***Block 2:***

Lots #1-4: Land=\$19,950

Lots #5,6: ***SOLD***

## ***Block 3:***

Lots #1,2: Land=\$19,950

***\*Plus estimated utilities, each lot=\$28,000***

***\*Protective building covenants apply***

***\*Preston Housing Incentive***

**AFFORDABILITY**



**Located in beautiful,  
historic Bluff Country**



MAKE YOUR DREAM A REALITY

**RECREATION**

# Demographics

Population: 1,220 with a daytime population of 1728.

Median age: 40.3

Median household income: \$51,762.

Median property value: \$185,507

Home ownership rate: 71.8%.

Average commute time is 24.2 minutes. City Lines provides transportation to and from Rochester to work at Mayo Clinic, this is a very popular mode of transportation.

Largest universities near Preston: Winona State University, with 2,134 graduates, Saint Mary's University of Minnesota, with 1,788 graduates.

Technical colleges: Rochester Community and Technical College, Riverland Community College in Austin, MN and Minnesota State College-Southeast Technical in Winona, MN

Preston is one hour from La Crosse, WI, one hour from Winona, MN, one hour from Austin, MN, forty five minutes from Rochester, MN and forty five minutes from Decorah, IA

# COMMUNITY

Livability

# Preston, MN



- Groundbreaking, new, state-of-the-art veterans home
- Affordable child care/development
- Easy commute to Rochester
- MN Trout fishing capital
- Historic Bluff Country trails