



**21. ∞ 124 W Main Street** circa 1920 the Grey Sandstone building was originally the Farmers and Merchants State Bank.

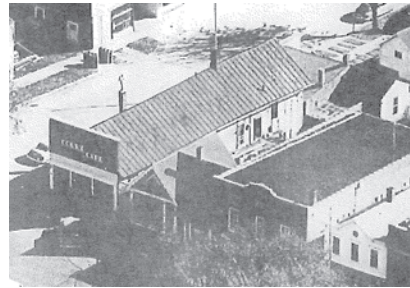
**22. ∞ 116 W Main Street** The Masonic Hall circa 1922 is of tile construction.



**23. ∞ 104 W Main Street** The Kruppenbacher building sometimes called the Gingerbread House or the Storybook House, is an old frame structure dating back to the 1850's and one of the oldest buildings in Preston. Early occupants were of the barber trade. It has also been a hat shop, candy store, homemade crafts, bookstore and antiques.



**24. ∞ 100 W Main Street** circa late 1800's. In 1905 it was the I & N Smith Poultry and Egg house. One of the long time business was the Green Lantern Cafe from 1926 to 1944, and later the Sip and Nibble Cafe. In most recent years there was plumbing and a heating businesses.



**25. ∞ 100 E Main Street** Across the street is the Ebert Building. This building was the Shaffer Bros. Hardware from 1890-1910, and Eberts "Our Own" Hardware Store 1911-1990. A specialty was making tin cupolas.



**26. ∞ 104 E Main Street** The brick house is one of the oldest buildings in Preston circa 1853. This building is built with soft brick which was made in one of the three brick yards in Preston. From 1890 to 1910 Sammy Wong ran a Chinese laundry business from this building. It was a residence for many years, until in the 1990's thru 2007 it was The Brickhouse on Main Coffeehouse. It is now a private residence.

## ST. ANTHONY STREET

**27. ∞ 136 St. Anthony Street** was once the Park Hotel with rooms going for \$2.50 a night. A fourth story was added in 1898 and train crews and passengers from the nearby Milwaukee Road depot often stayed here as well as other travelers. It was later remodeled as a women's clothing store."



**28. ∞ 132 St. Anthony Street** was the Fillmore County Bank from 1889-1898, when it closed its doors because of embezzled funds — Clements served ten years in the state's prison. It was also an abstract office. The original bank vault is intact and was recently restored (as a bathroom) along with the historic high ceilings and cut-glass front windows and doors.



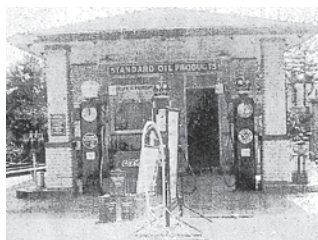
**29. ∞ 126 St. Anthony Street** once was a millinery shop in 1860's. Many business were in this building and was purchased in 1945 to become Pugh's Paint & Wallpaper until early 1970's. It was later remodeled for a restaurant.

**30. ∞ 120 St. Anthony Street** A children's clothing store was on one side and a jewelry store on the other. Kelly Printing, the Fillmore Co. Journal and the National Trout Center had its beginnings here.

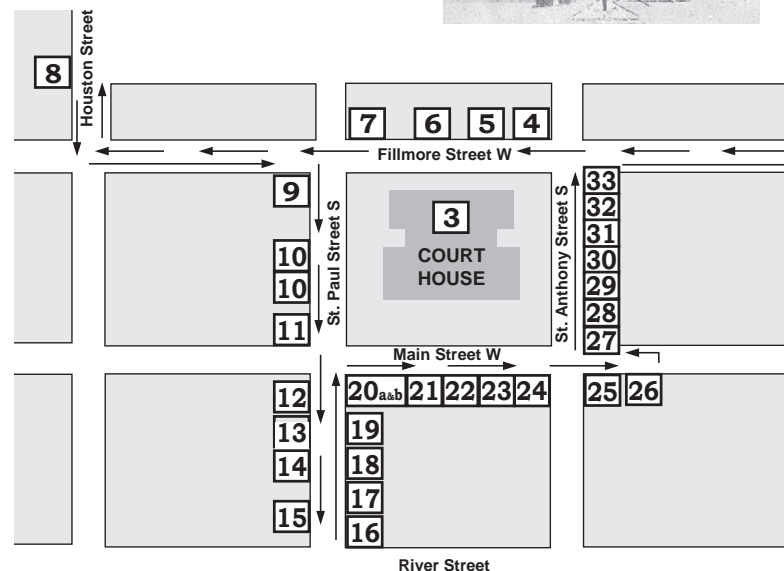


**31. ∞ The Popcorn Stand** Was established in 1934. Each summer it was pulled to the fair grounds where popcorn was sold at the Fillmore Co. Fair. Now it is stationary in hopes it will be reopened someday.

**32. ∞ 110 St. Anthony Street** A jewelry shop was located here in the early 1950's. Later Tony's Pizza was opened here until it was purchased again and reopened as a sandwich shop.



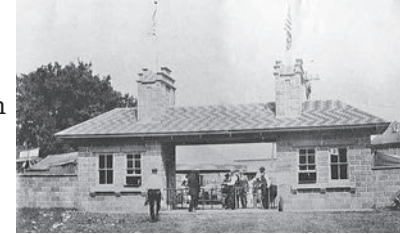
**33. ∞ 108 St. Anthony Street** This was the location of one of Preston's seven gas stations, the Standard Oil 1923-1960's.



**Back tracking to the Bike Trail parking lot, cross over the Root River, you will come to the entryway of the**

## FILLMORE COUNTY FAIRGROUNDS

**34. ∞** In 1875 the Fillmore County Fair was permanently placed in Preston. This entryway was constructed in 1919 as a memorial to the veterans of World War I. In 2019, on its 100th birthday, the structure was restored and night time lighting added



**35. ∞** On the grounds of the fairground is the O'Hara country schoolhouse from Amherst Township. Established in 1870, the school closed in 1961 due to consolidation. The school has been restored as a typical one room school by the Preston Historical Society. It is open during the County fair.



**36. ∞** Going back over the bridge and following the bike trail North, you will be walking on the original railroad bed and will be coming upon the Preston Brewery which started production in 1859. The beer produced was "Forget Me Not" beer, which was distributed to all the neighboring towns. When prohibition was declared the sheriff and deputies dumped all the beer. During this time they made soft drinks before closing for good. It is now a private residence.



### Acknowledgements

PUBLICATIONS:  
Coming Home Preston's  
125 Anniversary

PRESTON Images of  
America by Al Mathison

ARTICLES:  
"I Can Still Remember"  
by Dick Wildgrube

Cover image by  
Charles A. Capek



[www.prestonmnchamber.com/  
play/attractions/preston-walking-tour/](http://www.prestonmnchamber.com/play/attractions/preston-walking-tour/)



# WALKING TOUR



**Preston  
Historical  
Society**

[www.prestonmnhistory.com](http://www.prestonmnhistory.com)



**Preston  
PUBLIC UTILITIES**

[www.prestonmntourism.com](http://www.prestonmntourism.com)



## THE START OF THE HISTORIC WALKING TOUR OF PRESTON

**1. ∞ Historic Elevator.** You are at Preston’s railroad center (see adjacent *The Milwaukee Road in Preston* exhibit dedicated in 2019) – all that is left is the 1902 Milwaukee Elevator now on **National Register of Historic Places** – with crib and dovetail grain bins inside. The Preston Historical Society has restored the building and added a Milwaukee Road “rib-side” boxcar, caboose and a motorcar/trailer. The caboose is often open to the public and has historic railroad artifacts donated by the public and former employees.



**2. ∞ Historic Preston School Building** The large brick building on the hill overlooking the trailhead is the Preston School Building built in 1923 and housed both elementary and high school. In 1922 the original school building burned down. Today it is apartments and lodging. Can be viewed at 112 Pleasant Street NW.



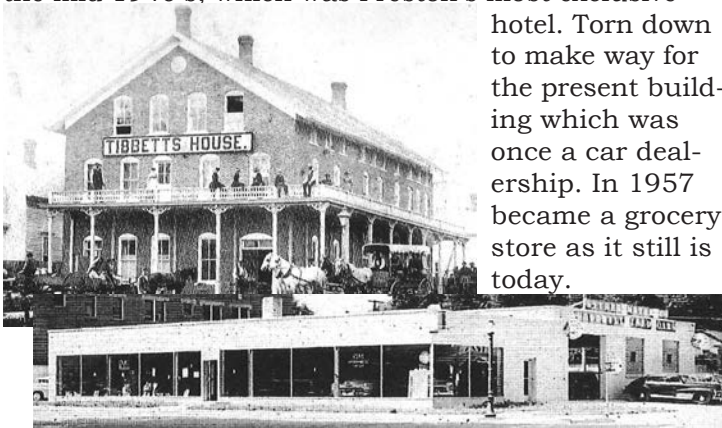
## FILLMORE STREET

*As you start your walking tour of Historic downtown Preston you are on the corner of Fillmore Street and St. Anthony you will be walking around the Courthouse Square.*

**3. ∞ 101 Fillmore Street W** The Fillmore County Courthouse stands in the middle of Preston’s public square. The original building was constructed in 1863 with additions added over the years. Torn down in 1956, the present building was built with an extensive update in 2008.



**4. ∞ 105 Fillmore Street W** Looking across the street on this corner stood the Tibbetts House from 1885 until the mid 1940’s, which was Preston’s most exclusive hotel. Torn down to make way for the present building which was once a car dealership. In 1957 became a grocery store as it still is today.



**5. ∞ 129 Fillmore Street W** “Grand Opera House” (circa 1903) the upstairs with its wide stairs, was the center of cultural activities, traveling movies, political meetings, dances and indoor athletic events. The Preston Tigers baseball was the second best ball team in the United States in the early 1900’s. The first level has always housed businesses as it does today. In 1903 First National Bank and Gartner Grocery Store were located here. Gartner built this series of brick buildings.



**6. ∞ 141 Fillmore Street W** is the oldest building on the block as shown in an 1894 picture, when a fire destroyed all the wood buildings. This building always served as a business building with the American Legion on the top floor at one time.



**7. ∞ 157 Fillmore Street W** The corner brick building (circa 1890) was always a funeral home and furniture store through the years, today it is still a funeral home.

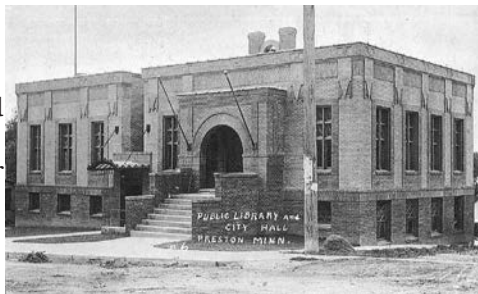
## HOUSTON STREET



**8. ∞ 109 Houston Street** The Fillmore County Jail, built in 1864, is constructed of local materials (brick, stone and wood) in the Italianate style. It is now a Bed & Breakfast and is on the **National Register of Historic Places**.

## ST. PAUL STREET

**9. ∞ 101 St. Paul Street NW** The Preston Carnegie Library was completed in 1912. Originally the Town Hall was on the South side of the library with the city jail on the lower level. Today the library occupies the upper level and the city offices are located on the lower level. The firehall once occupied this lower space.



**10. ∞ 121 St. Paul Street** As you walk South from the library this next building was once known as Keehn’s Meat Market.



**10. ∞ 125 S St. Paul Street** At one time this was a confectionery shop and later a popular restaurant.

**11. ∞ 192 St. Paul Street** is now one business. Once it was the Victory Café on the North end and later the post office and later yet a doctor’s office. On the N.W. corner of St. Paul and Main Street was the 1st National Bank, one of the three banks in Preston. It was closed after finding funds had been misappropriated.



**12. ∞ 200 St. Paul Street** Built in 1907, this building once housed a hardware store with the central office for NW Bell Telephone Co. upstairs. The upstairs has now been remodeled into apartments.



**13. ∞ 209 St. Paul Street** Here was a thriving men’s clothing store. The first owner’s names are still on the cornice of each building.

**14. ∞ 212 St. Paul Street** A pool hall with a nine pin bowling alley was once in this building. Later it became the post office with the Servicemen’s Club located upstairs. When the post office built a new building the Servicemen’s Club moved downstairs in it’s present location.

**15. ∞ 235 St. Paul Street** Was once the Preston Republican Newspaper office.



**16. ∞ 220 St. Paul Street** Originally there were four businesses in this building before being torn down. On the corner was Creamery Produce which purchased eggs and sold feed; Schibursky’s shoe repair shop; a dry cleaner; and a dentist office.



**17. ∞ 216 St. Paul Street SW** was Andy’s Candy Store. Eventually it was remodeled in 1933 to become Andy’s Cafe after prohibition ended. It later became a tavern and then a restaurant/pizza shop.

**18. ∞ 208 St. Paul Street** The Preston Bakery was located here until 1970’s.

**19. ∞ 206 St. Paul Street SW** is probably the narrowest storefront in downtown. Many small businesses have existed in this building. In the early 40’s it was a café; in 1948-1960 it was an optometrist office before becoming a reality business and now a beauty shop.

## MAIN STREET

*From St. Paul Street turn right onto the Main Street, with the Court House to the left.*

**20. ∞ 152 W Main Street** was known as the Syndicate Building circa 1881. **136 W Main** was called “Old Reliable” Mercantile Store of Hard and Kuethe. At one time there were eight sewing machine operators on the second floor. The beautiful brick work was covered in a modernization upgrade.

