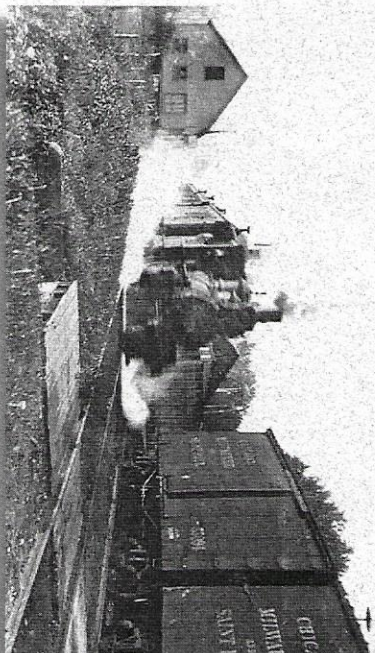


Preston Historical Society

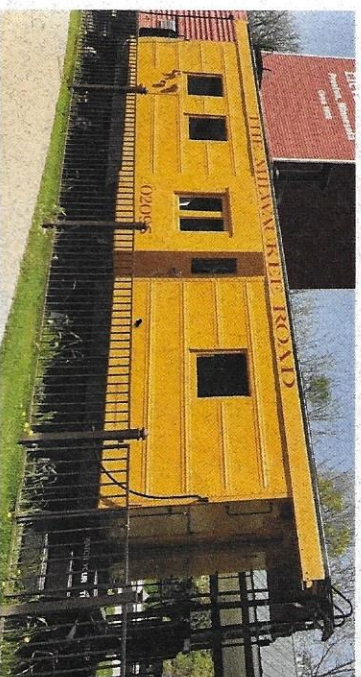
Sunday afternoon the side tracks near the depot were pretty well crowded with cars. We understood that about 40 of them were to be loaded with barley and that it required in the neighborhood of 30 or more to take away the grain stored away in the flathouses and elevators at this place. Preston Times 1873



The Milwaukee Elevator stands as an icon and historical link for all area people to the railroad and Preston's agricultural past. It was last used to store grain in the 1980's. PHS is in the process of restoring the bagging shed and scale house. The elevator is now on the *National Register of Historic Buildings.*



Preston Historical Society has added a Milwaukee Road boxcar and a 1951 Milwaukee Road caboose No. 02095 next to the Milwaukee Elevator. Enclosure fence surrounds the area for safety.



Preston Historical Society restored the O'Hara Schoolhouse, which is located at the Fillmore County Fairgrounds and is open during the Fillmore County Fair held in July.

Preston High School graduation pictures, 1911 – 1959, are kept at the Preston Public Library for viewing.



Join the Society and help continue making the Elevator a focal point of Preston.

Keep Preston History Alive.



Preston Historical Society
PO Box 138
Preston, MN 55965

- _____ \$25 Individual Yearly
- _____ \$35 Family Yearly
- _____ \$150 Lifetime
- _____ \$75 Business Yearly
- _____ \$200 Lifetime Business
- _____ **"Plaque Project"**
- _____ \$300 name on Elevator Plaque
- _____ \$200 name on Caboose Plaque
- _____ \$100 name on Boxcar Plaque

Name _____

Address _____

City _____

State _____ Zip _____

Phone _____

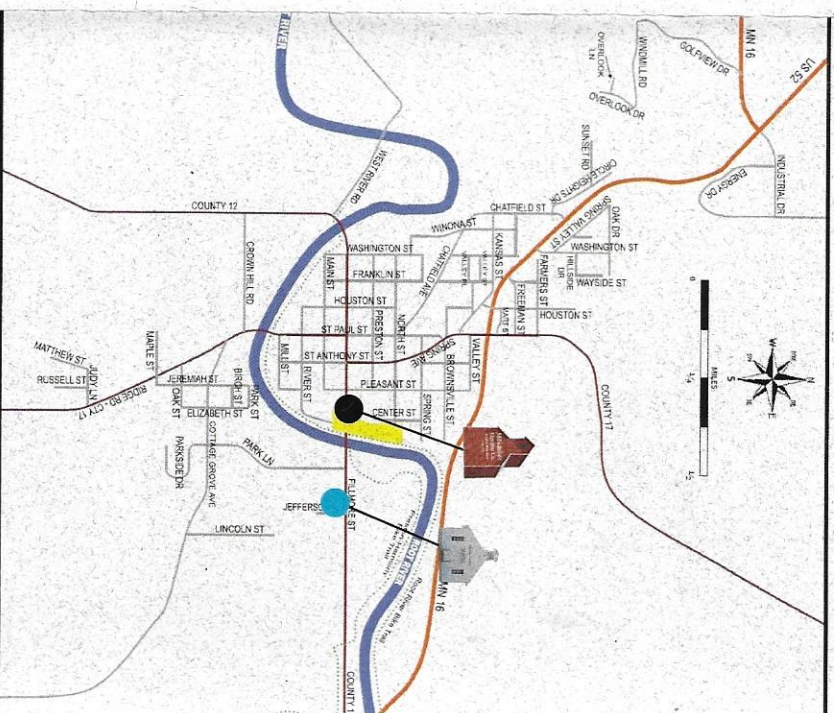
Email _____

The Preston Historical Society has a 501(c)(3) status and is a non-profit organization. All donations are tax deductible as allowed by law.

City of Preston

Minnesota

City Street Map



- Historic Elevator
- O'Hara School
- Trailhead Parking Lot
- Bike Trail
- Hwy 52
- Root River

FIND US ON

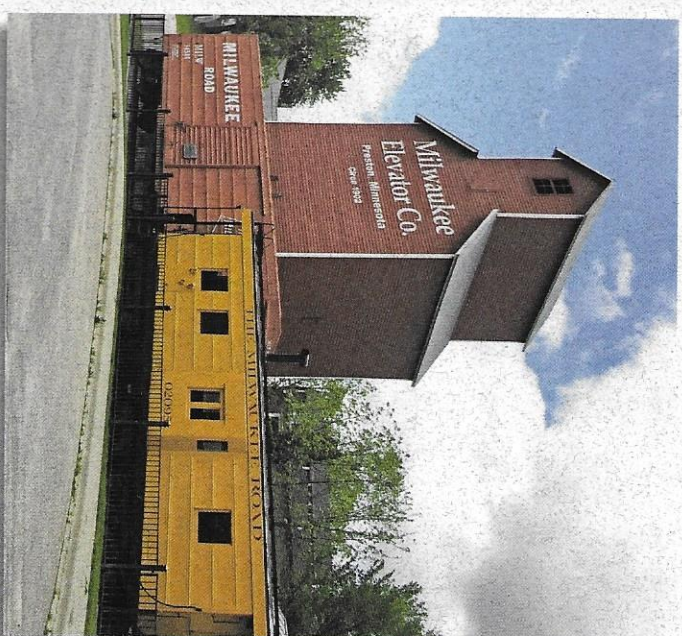
Preston Historical Society - MN



prestonhistoricalsociety@gmail.com

www.prestonmnhistory.com

Preston Historical Society



1902 Historic Milwaukee Grain Elevator
Preston, Minnesota

LOCATED at the Trailhead parking lot
of the Preston Bike Trail,
three blocks East from downtown
Preston on East Fillmore Street.